

KEYSTONE COMPAC® CONTEMPORARY WALL

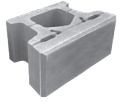


Dove Gray

Granite City Blend

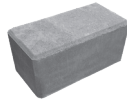
The Compac® Contemporary's design and features make it a wall option that's hard to beat. Large sizes that are perfect for tight radius curves and vertical core alignments make installation fast and easy. With a smooth stone appearance and ten color options, the Contemporary offers modern appeal to complement any landscape.

nicolock[®]
PAVING STONES • RETAINING WALLS • OUTDOOR LIVING
 **paver-shield**[™]



8" x 18" x 12"

40 Sq Ft on Pallet
40 Pcs on Pallet
Pallet Weight: 3,100 lbs



8" x 18" x 9"
Corner Piece Sold Separately

32 Sq Ft on Pallet
32 Pcs on Pallet
Pallet Weight: 3,100 lbs



Adobe Blend



Chesapeake Blend*



Dove Gray



Golden Brown Blend



Granite City Blend



Sahara*



Snow*



South Bay Blend



Travertina*



Westchester Blend

*Premium Color

Maximum exposed height for gravity walls is 36" under ideal conditions. Soil type, crest slopes and surcharges will decrease max exposed height for gravity walls. Consult a professional engineer to determine site and specific colors.

NOTE: All walls over 2' in height or as required by local code should be designed by a licensed professional engineer. All measurements are nominal. Variance in square footage or linear footage coverage can be up to 5% depending on joint width. The possible occurrence of efflorescence does not affect the structural integrity of the product. Efflorescence is a normal occurrence in concrete products and will dissipate with normal weathering. The use of concrete as a base or setting bed may increase the possibility of efflorescence.